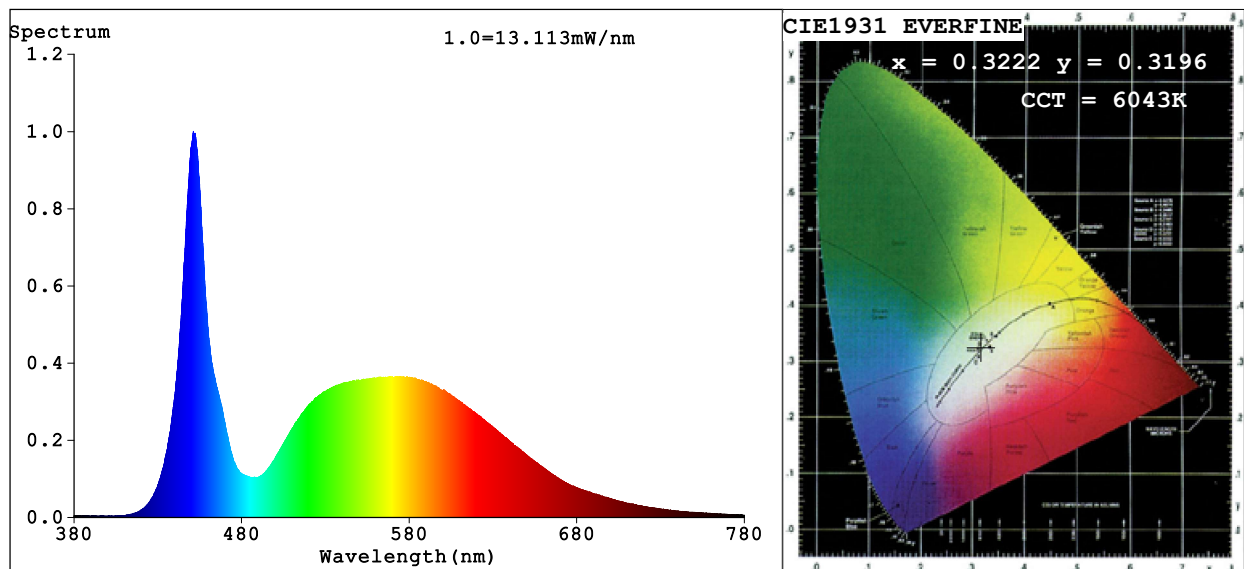


## Spectrum Test Report



### Color Parameters:

Chromaticity Coordinate:  $x=0.3222$   $y=0.3196$   $u'=0.2082$   $v'=0.4646$   
CCT=6043K (Duv=-0.0065) Dominant WL:Ld =472.1nm Purity=5.2%  
Ratio:R=14.7% G=80.8% B=4.5%; Peak WL:Lp=451.2nm FWHM=16.2nm  
Render Index:Ra=81.7 CRI=74.2 TM30:Rf=75 Rg=97 Lav=547.3nm  
R1 =83 R2 =85 R3 =83 R4 =83 R5 =82 R6 =76 R7 =87  
R8 =74 R9 =21 R10=61 R11=81 R12=49 R13=83 R14=90 R15=83

### Photo Parameters:

Flux = 299.3 lm Eff. : 29.57 lm/W Fe = 983.6 mW Scotopic:617.5 S/P:2.0631

### Electrical parameters:

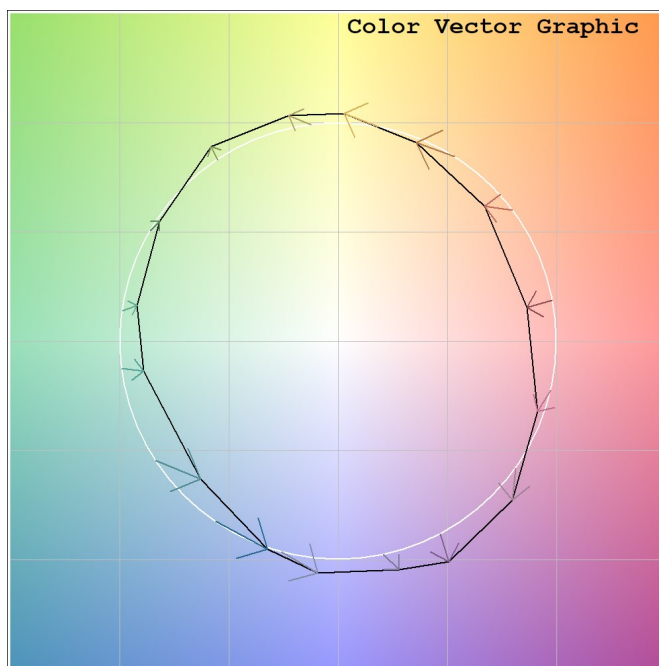
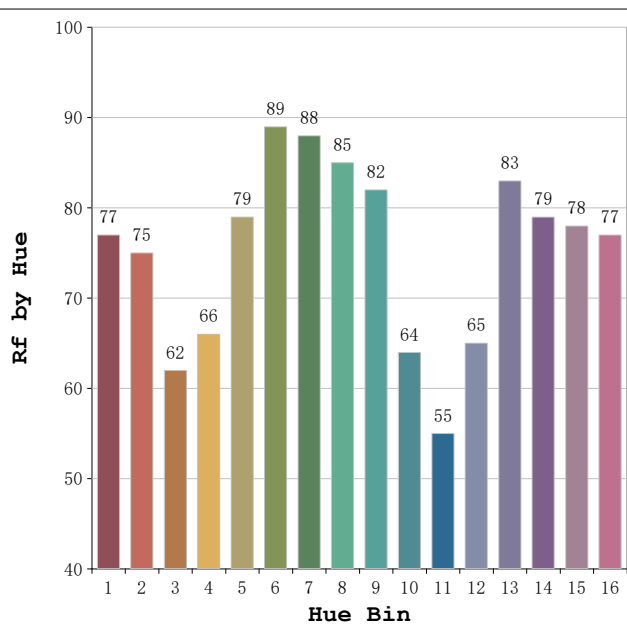
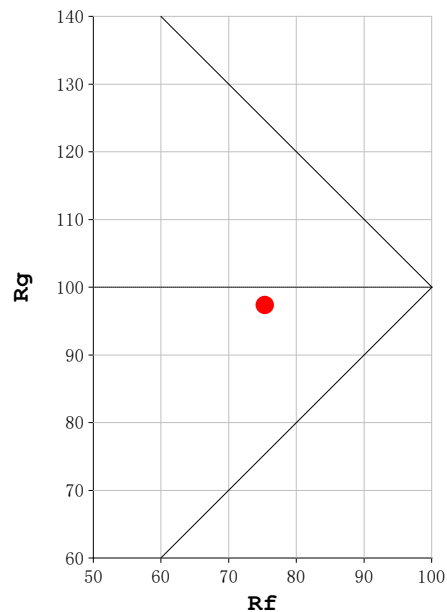
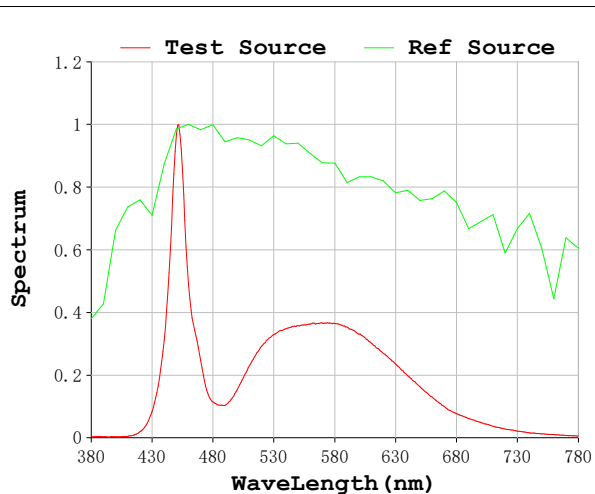
V = 23.998 V I = 0.4218 A P = 10.12 W PF = 1.000

Status: Integral T = 2000 ms Ip = 34249 (52%)

Model:Neón Sing 6000K  
Tester:Sergio Carneros  
Temperature:27Deg  
Manufacturer:Luz Negra

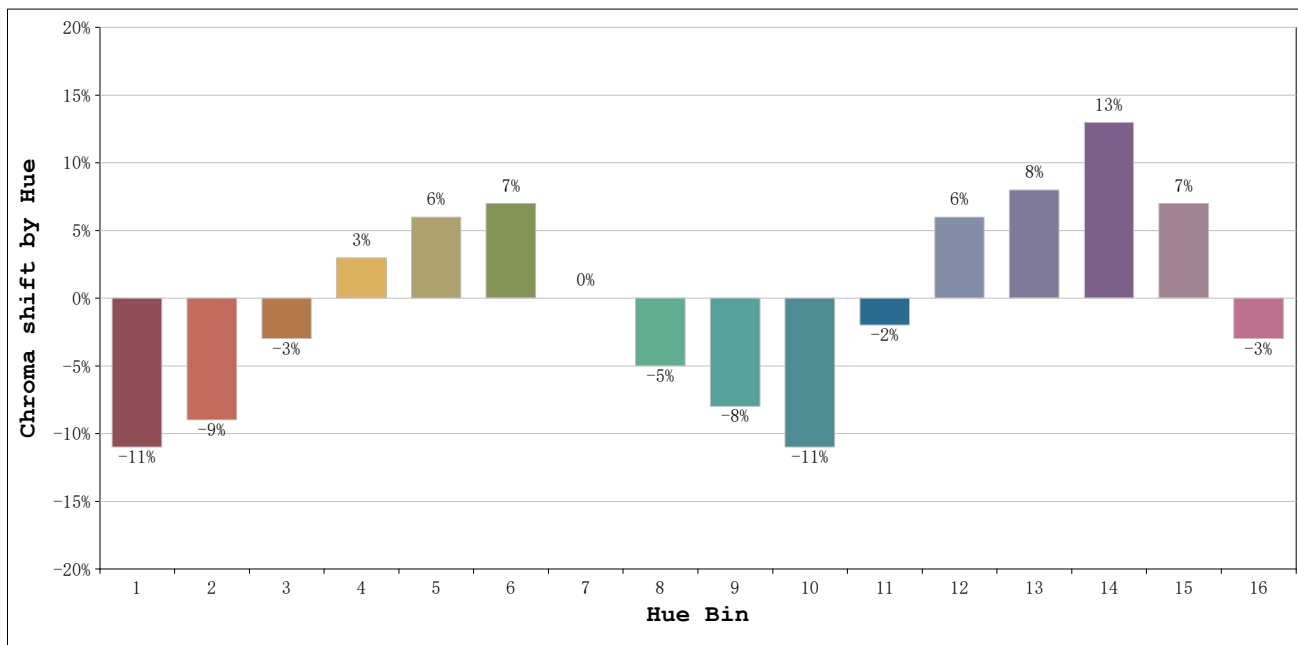
Number: 10.255  
Date:2023-11-30 09:24:14  
Humidity:35%  
Remarks:Neón de 100cm

**Rf: 75**      **CCT: 6043 K**      **u': 0.2082**  
**Rg: 97**      **Duv: -0.0065**      **v': 0.4646**



Model:Neón Sing 6000K  
 Tester:Sergio Carneros  
 Temperature:27Deg  
 Manufacturer:Luz Negra

Number: 10.255  
 Date:2023-11-30 09:24:14  
 Humidity:35%  
 Remarks:Neón de 100cm



Hue Bin	Hue Angle	Rf	Graphic shift(%)	
			Chroma	Hue
1	0.0° - 22.5°	77	-11	0
2	22.5° - 45.0°	75	-9	9
3	45.0° - 67.5°	62	-3	18
4	67.5° - 90.0°	66	3	17
5	90.0° - 112.5°	79	6	9
6	112.5° - 135.0°	89	7	0
7	135.0° - 157.5°	88	0	-5
8	157.5° - 180.0°	85	-5	-3
9	180.0° - 202.5°	82	-8	3
10	202.5° - 225.0°	64	-11	18
11	225.0° - 247.5°	55	-2	27
12	247.5° - 270.0°	65	6	18
13	270.0° - 292.5°	83	8	6
14	292.5° - 315.0°	79	13	-3
15	315.0° - 337.5°	78	7	-12
16	337.5° - 360.0°	77	-3	-10

Model:Neón Sing 6000K  
 Tester:Sergio Carneros  
 Temperature:27Deg  
 Manufacturer:Luz Negra

Number: 10.255  
 Date:2023-11-30 09:24:14  
 Humidity:35%  
 Remarks:Neón de 100cm